

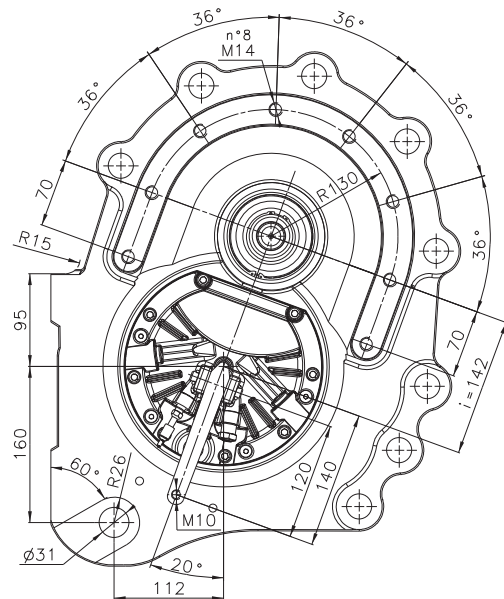
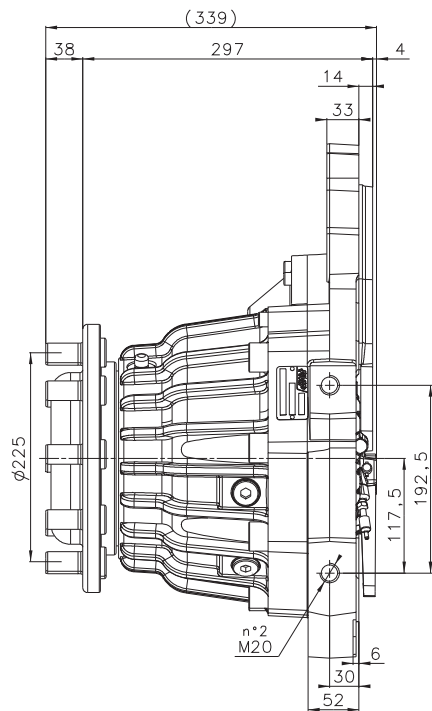
DDS 855 - Dual Drive System

- Electronic differential
- Electronic differential lock
- Power range 8-11 Kw
- Voltage 48V - 144V
- Torque range max 5000 Nm
- Many gear ratios available
- Service brake and parking brake



The AC-M2 Controller is designed for lift trucks and electrical vehicles using dual AC motors up to 26Kw. Based on high reliable DCB technology and stable ITC Control Algorithm, AC-M2 Controller ensures the best performances without use of mechanical differential.

The AC-M2 can be connected via CAN bus to other AC controllers for 3-4 AC motors applications.



drawings shows positive brake lever and right hand side gearbox

Gearbox data

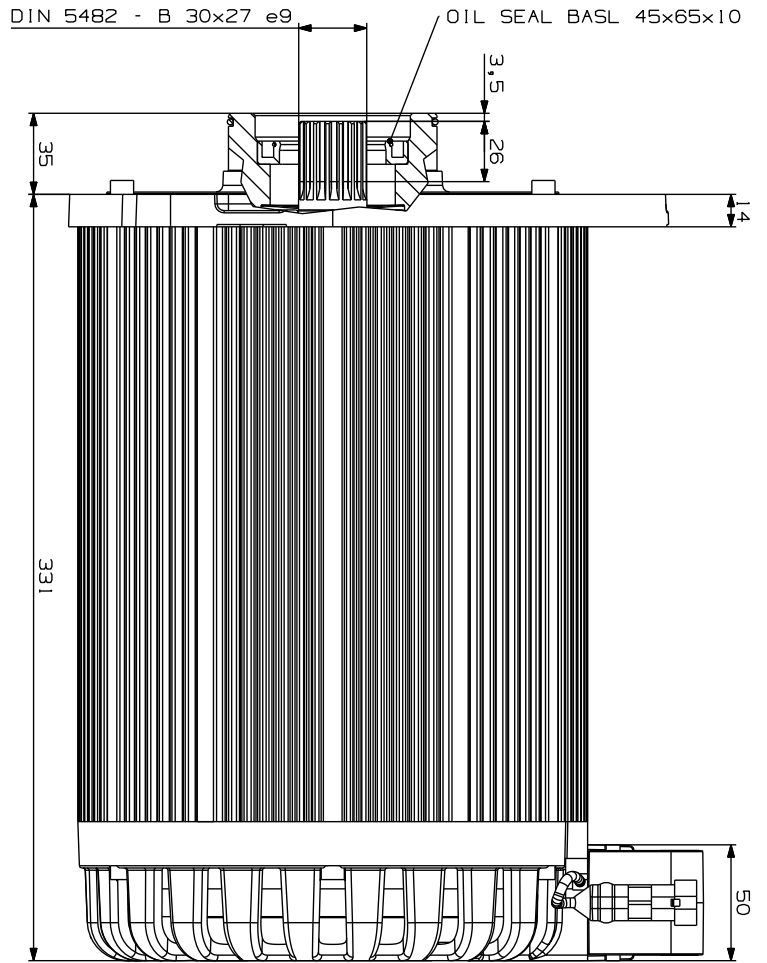
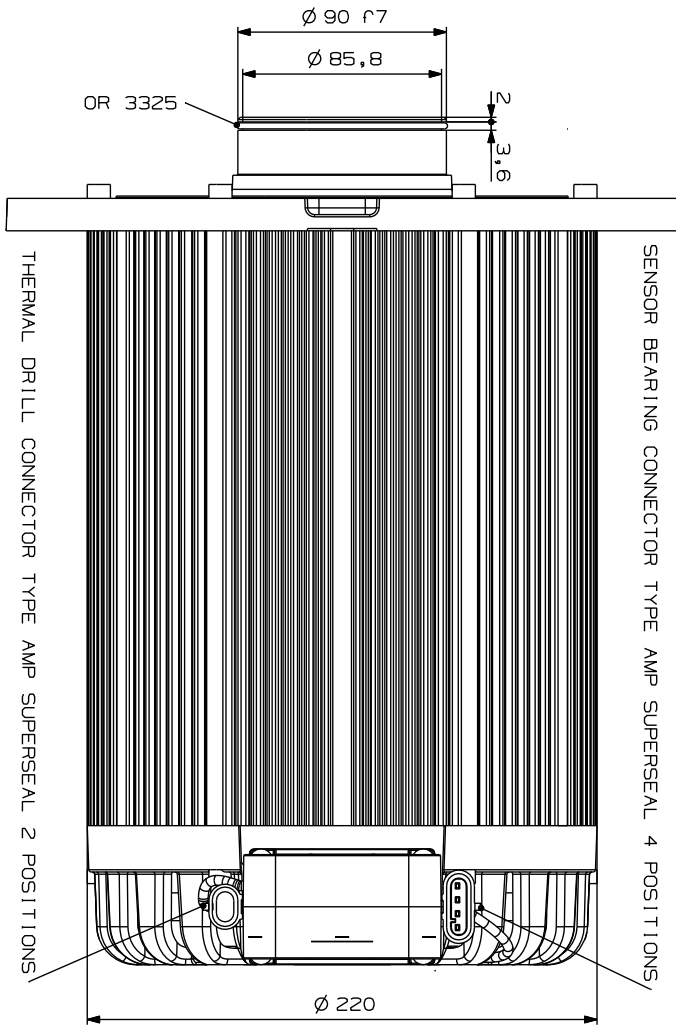
Max output torque	$T_{2_{max}}$ [Nm]	5.000		
Max wheel load	$F_{r_{max}}$ [dN]	6.200		
Electric motor power	P_{el} [kW]	8 ÷ 12		
Max input speed	n_{max} [rpm]	5.000		
Reduction ratio	i [.]	20,2	24,0	29,0
		36,1		
Tyre sizes	-	28x12,5-15; 250-15;		
Weight	m [kg]	125		
Oil quantity	V_{oil} [l]	1,4 ÷ 1,6		
Oil type	-	API GL4; SAE80W		

Service brake data

Brake fluid type	—	DOT4 or Mineral
Brake piston oil volume	V_{oil} [cm ³]	3,0 ÷ 5,5
Brake torque	T_{fr} [Nm]	5.600
Max brake pressure	pf_{max} [bar]	90
Peak brake pressure	pf_{pk} [bar]	150

Parking brake data

Brake lever stroke	S_L [mm]	17 ÷ 26
Parking brake capacity with 1000 N lever force	T_{frp} [Nm]	5.300

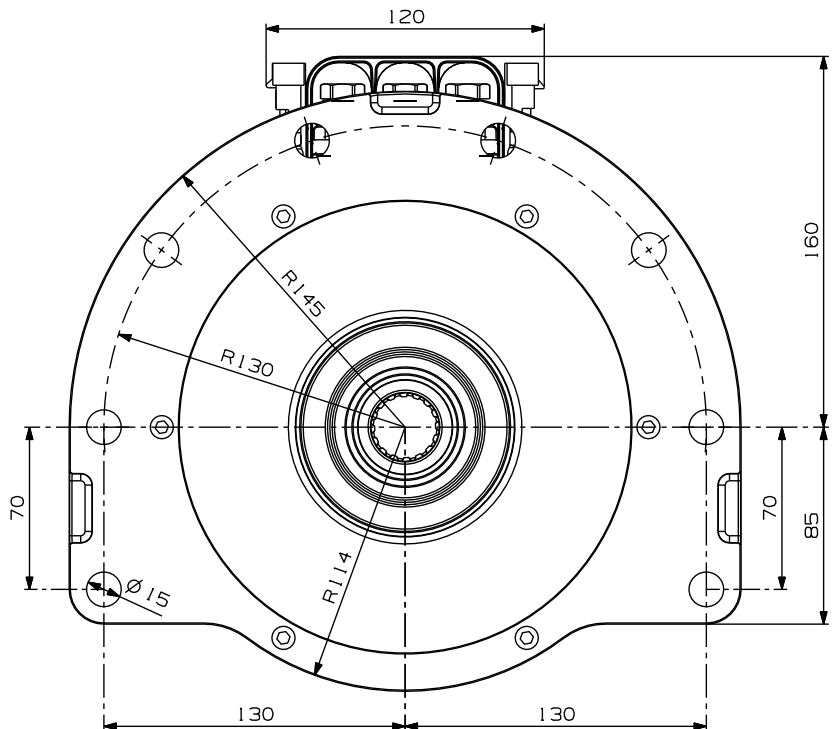


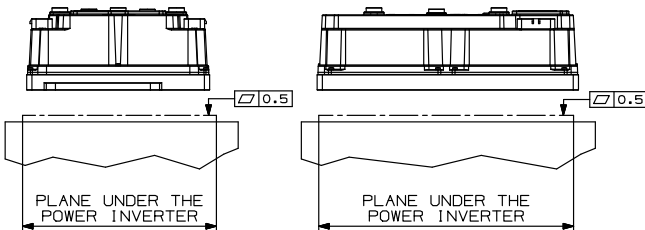
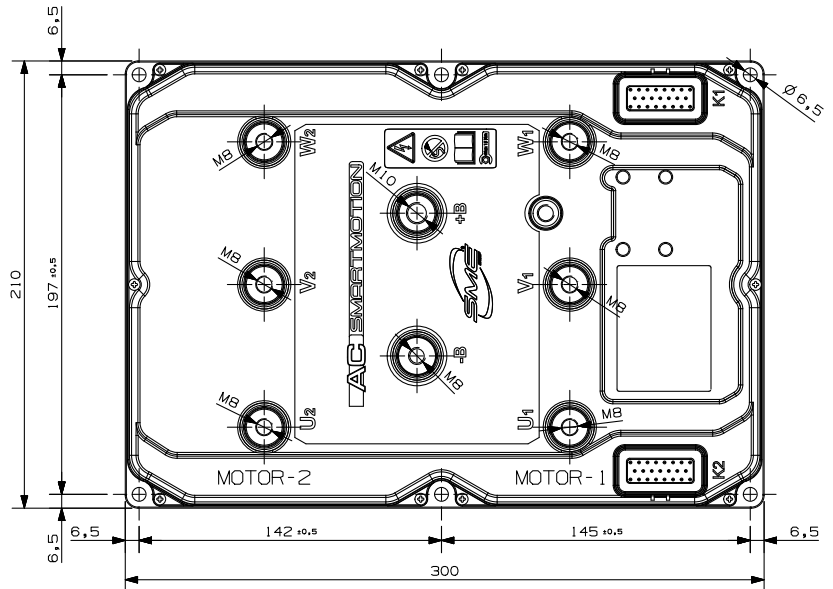
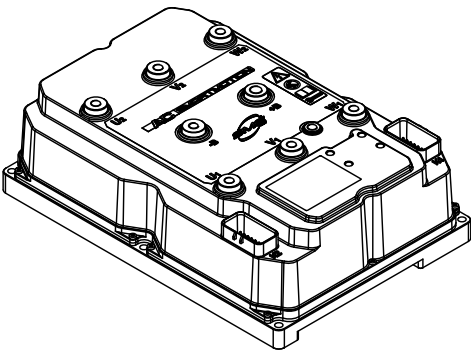
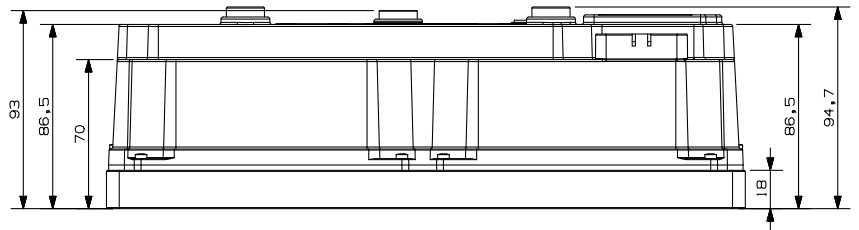
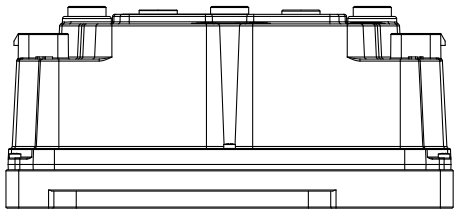
RATING DATA ACCORDING TO EN 1175-1 APPENDIX B

POWER	11 KW
VOLTAGE	54 V
CURRENT	154 A
RATED SPEED	1500 RPM
MAXIMUM SPEED	4500 RPM
FREQUENCY	50 Hz
cos φ	0,88
SERVICE	S2 60'
INSULATION CLASS	F
PROTECTION DEGREE	IP 20
BEARINGS	6206 2RS
WEIGHT	60 Kg

MAGNETIC SENSOR	
PIN 1	POSITIVE
PIN 2	GROUND
PIN 3	CHANNEL A
PIN 4	CHANNEL B

COMPONENT	CODE
ROTOR	MT467B
STATOR	MT599B
WINDING	MT472B
FRONT COVER	MT785A
REAR COVER	MT579B





UNIT OF MEASUREMENT IN mm

FIX THE POWER INVERTER WITH 6 SCREWS M6 AT MAX. TORQUE 6,4Nm

SUPPLY VOLTAGE	TBD
MOTOR-1 MAX CURRENT	TBD
MOTOR-2 MAX CURRENT	TBD
ENVIROMENTAL PROTECTION	IP65
WEIGHT	5,4Kg
TYPE CODE	TBD
SOFTWARE CODE	TBD
PRODUCT CODE	TBD

K1-K2 CONNECTOR AMPSEAL 23 POSITION	
PLUG ASSEMBLY	AMP CODE N° 770680-1
CONTACT 0,5-1,4mm ²	AMP CODE N° 770854-1