

***benevelli***

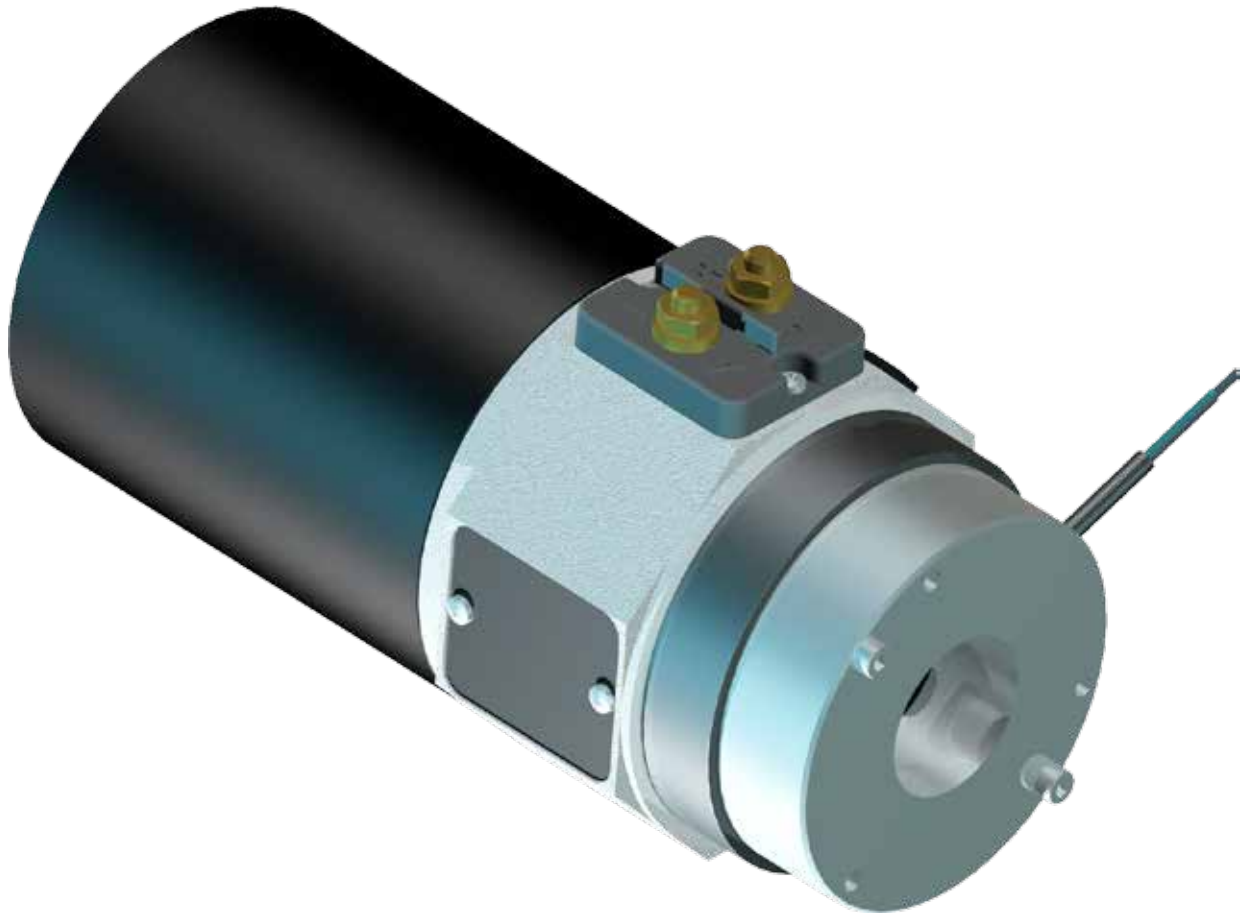
**TRANSAXLES & POWER DRIVE UNITS**  
**Made in Italy**

EXCLUSIEVE DISTRIBUTIE VOOR DE BENELUX:

**ALPATEK**

**BATTERY DRIVE SYSTEMS AND MOTORS**

# DC PERMANENT MAGNET 800W



## Technical Specifications

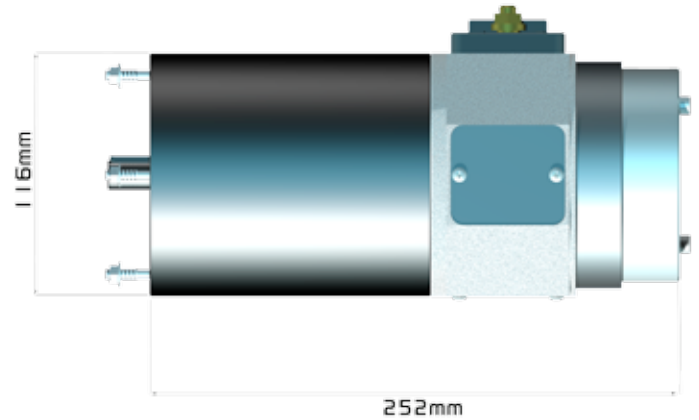
Motor Type	Direct Current Permanent Magnet
Rated Power	0,800 kW
Service	S2 30 Minutes
Rated Voltage	24V
Max. Revolution	2800rpm
Execution	4 Poles
Protection Class	IP54
Insulation	Class F
Weight	8,3 Kg
Cast Housing	Die Cast Alloy
Commutator	Silver-Copper Alloy
Rotor	Skewed Cogging-Less
Magnet Type	Ferrite
Brushes Type	Graphite-Copper

# DC PERMANENT MAGNET 800W

## Features

- Compact Size
- High Efficiency
- Precise Control (Cogging-less)
- High Coercive Force Magnets
- Low Noise Operations
- Made in Italy Product
- Long-Life Brushes, Costant Force Springs
- EM Brake Prepared (8 ÷ 12Nm)
- Ambient Temperature -10 + 60°C
- Complies with CE Standards
- UL Design Available on Request
- ATEX Version Available on Request
- 36V Execution Available on Request
- Self-cooled Version Available on Request

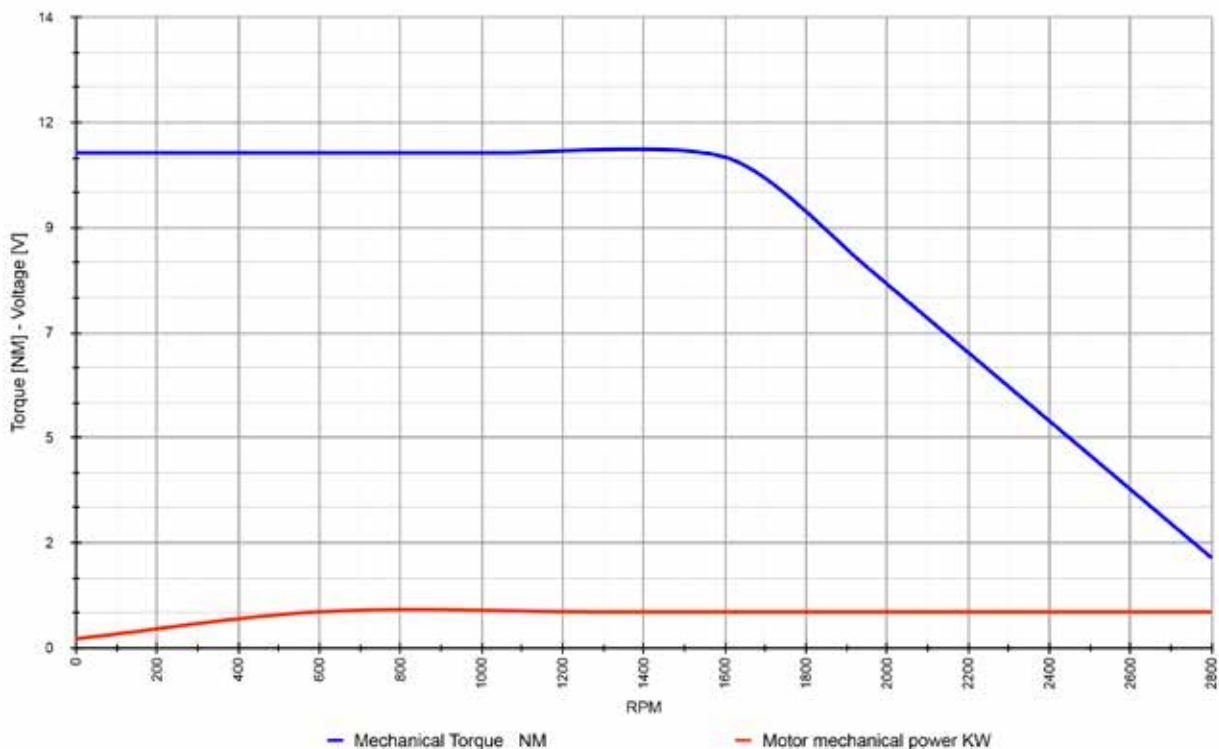
## Dimensions



AVAILABLE FOR TX1 & TX1 **PLUS**

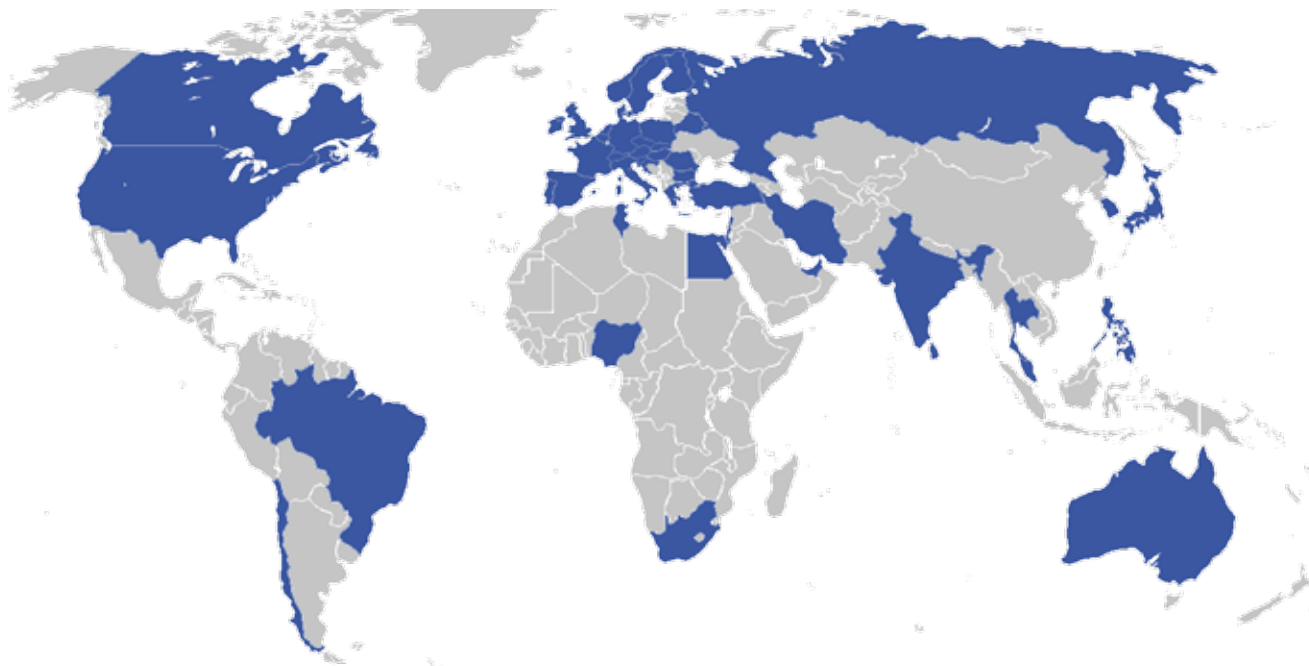


## Standard Motor Curve



Designed & Manufactured in Italy

our products are sold in 40 countries across 5 continents



Abu Dabhi  
 Austria  
 Australia  
 Belarus  
 Belgium  
 Brazil  
 Bulgaria  
 Canada  
 Chile  
 Croatia  
 Czech Republic

Denmark  
 Dubai  
 Finland  
 France  
 Germany  
 Hungary  
 India  
 Iran  
 Ireland  
 Israel  
 Italy

Japan  
 Lebanon  
 The Netherlands  
 Nigeria  
 Norway  
 Philippines  
 Poland  
 Portugal  
 Romania  
 Russia  
 Singapore

Slovenia  
 South Africa  
 South Korea  
 Spain  
 Sweden  
 Switzerland  
 Thailand  
 Tunisia  
 Turkey  
 United Kingdom  
 U.S.A.

EXCLUSIEVE DISTRIBUTIE VOOR DE BENELUX:

